

FOR IMMEDIATE RELEASE:  
Monday, November 16, 2009

CONTACT: Lise Bang-Jensen  
(518) 434-3100

## **NEW YORKERS CAN COMPARE SCHOOL SPENDING ONLINE**

The often opaque world of school finances has become more transparent with a new tool that allows New Yorkers to analyze how their school districts spend money and to compare them to nearly 700 other districts around the state.

Benchmarking New York--developed by the Empire Center for New York State Policy and The Business Council's Public Policy Institute--is a searchable database of school district spending (excluding only New York City) during the 2007-08 school year. The tool can be found at [www.SeeThroughNY.net](http://www.SeeThroughNY.net), the Empire Center's transparency web site where comparable Benchmarking data for local governments was posted in April.

Highlights of the data:

- School districts spent an average of \$10,692 per pupil on instruction, which includes teacher salaries, supplies and special education, but excludes employee benefits, transportation, capital construction and other expenditures. Lancaster CSD in Erie County spent \$5,700 per pupil on instruction, the lowest in the state. The highest spender was Wainscott CSD, a Suffolk County district with 17 students, which spent \$97,346 on instruction per pupil.
- Health insurance for teachers, staff and retired employees cost an average of \$2,194 per pupil. Ranking #1 was Newcomb CSD in Essex County at \$12,999 per pupil.
- Striking similarities in per pupil spending can be seen in comparisons of some districts. For example, Chappaqua CSD, an affluent and high achieving district in Westchester County spent a total of \$23,872 per pupil, slightly more than the Troy City SD, an urban district with lower academic scores in Rensselaer County, which spent \$23,486 per pupil. Costs of instruction were similar: Chappaqua, \$11,555; and Troy, \$11,705.

"New Yorkers spend more per pupil on public education than any other state, but don't get impressive results. The high costs drive up property taxes, making New York a more difficult place to grow businesses and create jobs. The new data on Benchmarking New York will allow residents and businesses to see how their school district is spending their money," said Kenneth Adams, president and CEO of The Business Council. "It will help them see if they are getting value as taxpayers."

"Comparisons are an essential tool for taxpayers who want to evaluate how well their school districts are operating," said E.J. McMahon, director of the Empire Center.

For additional understanding of school spending, visit [www.SeeThroughNY.net](http://www.SeeThroughNY.net), which also posts salaries of school employees as well as labor contracts for teachers and superintendents.

Attached is a regional breakdown of total and instructional spending per pupil.

<b>Per Pupil Spending - Breakdown by Region</b>				
<i>Capital Region</i>	<b>Total<sup>1</sup></b>		<b>Instruction<sup>2</sup></b>	
	<i>Total</i>	<i>Region Rank</i>	<i>Total</i>	<i>Region Rank</i>
Albany City School District	\$22,628	17	\$11,563	10
Argyle Central School District	\$16,553	55	\$8,529	36
Averill Park Central School District	\$16,563	54	\$7,439	59
Ballston Spa Central School District	\$15,897	61	\$7,304	64
Berkshire Union Free School District	\$62,207	3	\$35,762	2
Berlin Central School District	\$19,563	37	\$9,759	20
Berne-Knox-Westerlo Central School District	\$19,452	39	\$9,198	28
Bethlehem Central School District	\$22,302	20	\$8,001	48
Bolton Central School District	\$27,319	8	\$10,649	13
Brunswick Central School District	\$20,270	33	\$7,229	67
Burnt Hills-Ballston Lake Central School District	\$15,730	63	\$7,646	56
Cairo-Durham Central School District	\$15,040	71	\$7,340	62
Cambridge Central School District	\$20,622	28	\$7,254	66
Catskill Central School District	\$22,754	14	\$9,705	21
Chatham Central School District	\$19,254	40	\$8,202	42
Cohoes City School District	\$19,034	41	\$9,472	25
Corinth Central School District	\$15,548	65	\$7,595	57
Coxsackie-Athens Central School District	\$15,440	67	\$6,918	72
Duanesburg School District	\$16,360	56	\$7,417	60
East Greenbush School District	\$17,912	47	\$8,234	40
Edinburg School District	\$34,950	6	\$18,382	4
Fort Ann School District	\$20,620	29	\$8,070	45
Fort Edward School District	\$19,492	38	\$10,337	16
Galway School District	\$14,703	72	\$7,076	71
Germantown School District	\$21,354	24	\$10,269	17
Glens Falls City School District	\$20,507	30	\$9,024	31
Glens Falls Common School District	\$22,435	19	\$15,115	6
Granville School District	\$18,209	46	\$9,007	32
Green Island School District	\$20,765	27	\$8,824	34
Greenville School District	\$18,924	43	\$9,050	30
Greenwich School District	\$18,285	44	\$8,140	44
Guilderland School District	\$15,887	62	\$7,768	53
Hadley-Luzerne School District	\$20,215	35	\$9,128	29
Hartford School District	\$20,319	32	\$7,946	49
Hoosic Valley School District	\$16,100	59	\$7,844	51
Hoosick Falls School District	\$17,865	48	\$7,409	61
Hudson Falls School District	\$22,622	18	\$8,016	47
Hudson School District	\$24,309	12	\$10,478	15
Hunter-Tannersville School District	\$25,374	10	\$12,132	7
Johnsburg School District	\$24,795	11	\$10,584	14
Kinderhook School District	\$16,152	58	\$7,291	65
Lake George School District	\$18,219	45	\$8,233	41
Lansingburgh School District	\$15,945	60	\$7,440	58
Maplewood-Colonie School District	\$16,321	57	\$9,573	24
Mechanicville School District	\$14,290	73	\$7,093	70
Menands School District	\$28,924	7	\$15,801	5
New Lebanon School District	\$22,071	22	\$9,573	23
Niskayuna School District	\$21,753	23	\$8,039	46
North Colonie School District	\$14,272	74	\$6,880	73
North Greenbush School District	\$85,373	1	\$62,753	1
North Warren School District	\$22,656	16	\$9,662	22
Putnam School District	\$40,535	5	\$23,251	3
Queensbury School District	\$13,947	75	\$6,478	75
Ravena-Coeymans-Selkirk School District	\$20,478	31	\$10,198	18
Rensselaer School District	\$83,926	2	\$9,472	26

<sup>1</sup>Total includes capital spending; therefore district totals for a given year may be inflated by building spending.

<sup>2</sup>Instruction spending may include teacher salaries, supplies/materials, BOCES services, equipment, noninstructional salaries, etc.

## Per Pupil Spending - Breakdown by Region

<i>Capital Region (con't)</i>	<b>Total<sup>1</sup></b>		<b>Instruction<sup>2</sup></b>	
	<i>Total</i>	<i>Region Rank</i>	<i>Total</i>	<i>Region Rank</i>
Rotterdam-Mohonasen School District	\$13,021	76	\$6,258	76
Salem School District	\$17,059	50	\$8,365	37
Saratoga Springs City School District	\$15,115	70	\$7,155	69
Schalmont School District	\$20,247	34	\$8,341	38
Schenectady School District	\$16,579	53	\$9,799	19
Schodack School District	\$26,502	9	\$8,948	33
Schuylerville School District	\$16,817	51	\$8,172	43
Scotia-Glenville School District	\$15,186	69	\$7,747	54
Shenendehowa School District	\$15,599	64	\$6,823	74
South Colonie Central School District	\$16,780	52	\$8,312	39
South Glens Falls School District	\$15,518	66	\$7,329	63
Stillwater School District	\$15,208	68	\$7,193	68
Taconic Hills Central School District	\$18,995	42	\$7,838	52
Troy School District	\$23,486	13	\$11,705	9
Voorheesville Central School District	\$20,038	36	\$7,905	50
Warrensburg School District	\$22,694	15	\$11,970	8
Waterford-Halfmoon School District	\$22,127	21	\$9,288	27
Watervliet School District	\$20,892	25	\$8,784	35
Whitehall School District	\$17,175	49	\$7,736	55
Windham-Ashland-Jewett School District	\$49,508	4	\$10,987	12
Wynantskill School District	\$20,813	26	\$11,291	11
<i>Central New York</i>	<i>Total</i>	<i>Region Rank</i>	<i>Total</i>	<i>Region Rank</i>
Altmar-Parish-Williamstown Central School District	\$19,073	15	\$9,207	10
Auburn City School District	\$16,858	30	\$8,836	11
Baldwinsville Central School District	\$15,173	40	\$7,129	36
Brookfield Central School District	\$21,268	8	\$9,998	4
Canastota Central School District	\$14,775	45	\$6,903	39
Cato-Meridian Central School District	\$17,085	29	\$7,741	26
Cazenovia Central School District	\$14,000	47	\$5,895	48
Central Square Central School District	\$13,746	48	\$6,356	46
Chittenango Central School District	\$15,309	39	\$5,893	49
Cincinnatus Central School District	\$27,724	1	\$11,443	1
Cortland City School District	\$15,142	41	\$7,673	29
De Ruyter School District	\$19,870	13	\$9,541	9
East Syracuse-Minoa School District	\$20,851	10	\$8,771	12
Fabius-Pompey School District	\$18,553	18	\$7,121	37
Fayetteville-Manlius School District	\$15,101	43	\$6,332	47
Fulton School District	\$16,021	36	\$8,684	13
Hamilton School District	\$22,025	6	\$9,867	5
Hannibal School District	\$15,542	38	\$6,789	41
Homer School District	\$16,556	33	\$8,067	22
Jamesville-Dewitt School District	\$16,718	31	\$7,188	35
Jordan-Elbridge School District	\$17,113	28	\$6,961	38
Lafayette School District	\$23,781	2	\$11,001	2
Liverpool School District	\$17,772	21	\$7,761	25
Lyncourt School District	\$23,542	3	\$10,874	3
Madison School District	\$19,895	12	\$9,576	7
Marathon School District	\$17,597	22	\$8,387	15
Marcellus School District	\$16,189	35	\$6,643	42
Mc Graw School District	\$17,515	23	\$8,161	20
Mexico School District	\$18,611	17	\$8,370	16
Moravia School District	\$18,533	19	\$7,992	23
Morrisville-Eaton School District	\$20,853	9	\$8,108	21
North Syracuse School District	\$14,673	46	\$6,795	40
Oneida School District	\$16,430	34	\$8,369	17
Onondaga School District	\$23,232	4	\$8,364	18
Oswego School District	\$16,001	37	\$7,616	30
Phoenix School District	\$20,494	11	\$9,566	8
Port Byron School District	\$17,220	27	\$7,738	27

<sup>1</sup>Total includes capital spending; therefore district totals for a given year may be inflated by building spending.

<sup>2</sup>Instruction spending may include teacher salaries, supplies/materials, BOCES services, equipment, noninstructional salaries, etc.

<b>Per Pupil Spending - Breakdown by Region</b>				
	<b>Total<sup>1</sup></b>		<b>Instruction<sup>2</sup></b>	
<i>Central New York (con't)</i>	<i>Total</i>	<i>Region Rank</i>	<i>Total</i>	<i>Region Rank</i>
Pulaski School District	\$22,902	5	\$7,778	24
Sandy Creek School District	\$21,557	7	\$8,639	14
Skaneateles School District	\$17,264	26	\$7,362	33
Solvay School District	\$16,633	32	\$7,388	32
Southern Cayuga School District	\$19,573	14	\$8,190	19
Stockbridge Valley Central School District	\$17,503	24	\$7,302	34
Syracuse School District	\$18,762	16	\$9,725	6
Tully School District	\$15,124	42	\$6,533	45
Union Springs School District	\$17,310	25	\$7,441	31
Weedsport School District	\$18,181	20	\$7,690	28
West Genesee School District	\$13,677	49	\$6,582	44
Westhill School District	\$14,889	44	\$6,622	43
<i>Finger Lakes</i>	<i>Total</i>	<i>Region Rank</i>	<i>Total</i>	<i>Region Rank</i>
Albion Central School District	\$14,803	69	\$7,119	59
Alexander Central School District	\$17,321	38	\$8,167	35
Attica Central School District	\$17,371	37	\$7,188	57
Avon Central School District	\$16,376	50	\$6,619	67
Batavia City School District	\$21,641	9	\$8,723	21
Brighton Central School District	\$16,963	43	\$8,234	34
Brockport Central School District	\$16,912	45	\$7,422	53
Byron-Bergen Central School District	\$16,900	46	\$7,689	46
Caledonia-Mumford Central School District	\$15,806	58	\$7,284	55
Canandaigua City School District	\$16,335	52	\$8,019	40
Churchville-Chili Central School District	\$15,624	61	\$7,679	47
Clyde-Savannah Central School District	\$19,850	13	\$9,329	12
Dalton-Nunda Central School District	\$22,123	7	\$9,720	8
Dansville Central School District	\$17,379	36	\$7,929	41
Dundee Central School District	\$14,896	68	\$6,486	70
East Bloomfield School District	\$19,652	15	\$8,707	22
East Irondequoit School District	\$17,767	34	\$7,798	43
East Rochester School District	\$21,698	8	\$10,256	5
Elba School District	\$19,185	22	\$8,115	38
Fairport School District	\$14,727	70	\$7,083	62
Gananda School District	\$16,231	55	\$6,586	68
Gates-Chili School District	\$21,143	10	\$8,847	18
Geneseo School District	\$16,974	42	\$8,285	32
Geneva City School District	\$19,590	17	\$9,860	7
Gorham-Middlesex	\$20,284	12	\$9,070	15
Greece School District	\$15,521	63	\$7,284	54
Hilton School District	\$15,734	60	\$7,171	58
Holley School District	\$16,368	51	\$8,771	19
Honeoye Falls-Lima School District	\$15,138	67	\$7,109	60
Honeoye School District	\$17,974	31	\$8,340	31
Kendall School District	\$18,499	26	\$8,434	29
Le Roy School District	\$17,072	41	\$7,279	56
Letchworth School District	\$15,357	64	\$7,062	63
Livonia School District	\$16,172	57	\$6,800	65
Lyndonville School District	\$17,819	33	\$8,574	24
Lyons School District	\$23,230	3	\$9,315	13
Manchester-Shortsville School District	\$16,208	56	\$7,646	49
Marion School District	\$19,548	18	\$8,150	37
Medina School District	\$16,479	48	\$8,560	25
Mount Morris School District	\$23,207	4	\$9,416	11
Naples School District	\$19,633	16	\$8,511	28
Newark School District	\$17,158	40	\$8,404	30
North Rose-Wolcott School District	\$18,960	24	\$9,304	14
Oakfield-Alabama School District	\$16,441	49	\$8,056	39
Palmyra-Macedon School District	\$16,708	47	\$7,852	42
Pavilion School District	\$18,502	25	\$7,713	44

<sup>1</sup>Total includes capital spending; therefore district totals for a given year may be inflated by building spending.

<sup>2</sup>Instruction spending may include teacher salaries, supplies/materials, BOCES services, equipment, noninstructional salaries, etc.

## Per Pupil Spending - Breakdown by Region

<i>Finger Lakes (con't)</i>	<b>Total<sup>1</sup></b>		<b>Instruction<sup>2</sup></b>	
	<i>Total</i>	<i>Region Rank</i>	<i>Total</i>	<i>Region Rank</i>
Pembroke School District	\$16,259	54	\$8,159	36
Penfield School District	\$16,926	44	\$8,558	26
Penn Yan School District	\$18,459	27	\$9,691	9
Perry School District	\$18,298	29	\$8,642	23
Phelps-Clifton Springs School District	\$18,319	28	\$7,693	45
Pittsford School District	\$17,279	39	\$7,608	51
Red Creek School District	\$19,041	23	\$8,269	33
Rochester School District	\$19,788	14	\$9,911	6
Romulus School District	\$22,239	6	\$10,312	4
Rush-Henrietta School District	\$19,285	21	\$8,856	17
Seneca Falls School District	\$17,838	32	\$8,740	20
Sodus School District	\$20,443	11	\$9,459	10
South Seneca School District	\$22,945	5	\$10,707	3
Spencerport School District	\$17,406	35	\$7,637	50
Victor School District	\$15,558	62	\$6,549	69
Warsaw School District	\$19,432	19	\$8,921	16
Waterloo School District	\$18,097	30	\$7,675	48
Wayne School District	\$15,208	66	\$6,978	64
Webster School District	\$16,296	53	\$7,440	52
West Irondequoit School District	\$15,229	65	\$6,665	66
Wheatland-Chili School District	\$23,908	2	\$10,717	2
Williamson School District	\$19,289	20	\$8,538	27
Wyoming School District	\$30,836	1	\$13,011	1
York School District	\$15,764	59	\$7,088	61
<i>Long Island</i>	<i>Total</i>	<i>Region Rank</i>	<i>Total</i>	<i>Region Rank</i>
Amagansett Union Free School District	\$80,280	5	\$48,018	4
Amityville Union Free School District	\$26,902	40	\$13,453	40
Babylon Union Free School District	\$21,018	77	\$10,641	79
Baldwin Central School District	\$20,918	79	\$10,979	67
Bay Shore Union Free School District	\$23,282	54	\$11,956	55
Bayport-Blue Point Union Free School District	\$22,224	65	\$10,826	73
Bellmore Union Free School District	\$24,502	50	\$11,649	60
Bellmore-Merrick Central High School District	\$18,277	109	\$9,871	100
Bethpage Union Free School District	\$22,547	61	\$11,042	65
Brentwood Union Free School District	\$19,736	95	\$10,665	77
Bridgehampton Union Free School District	\$72,446	6	\$35,635	9
Brookhaven-Comsewogue School District	\$18,116	113	\$9,572	105
Carle Place School District	\$27,191	39	\$13,580	37
Center Moriches School District	\$22,397	63	\$10,647	78
Central Islip Union Free School District	\$26,456	42	\$14,211	31
Cold Spring Harbor Central School District	\$24,266	52	\$10,964	69
Commack Union Free School District	\$19,526	98	\$9,978	98
Connetquot Central School District	\$20,833	81	\$10,115	91
Copiague Union Free School District	\$22,303	64	\$12,322	52
Deer Park Union Free School District	\$20,570	86	\$10,549	81
East Hampton School District	\$32,113	24	\$15,163	26
East Islip School District	\$20,558	87	\$10,210	89
East Meadow Union Free School District	\$21,324	71	\$10,390	84
East Moriches School District	\$30,018	30	\$20,219	17
East Quogue School District	\$42,029	12	\$30,911	10
East Rockaway School District	\$30,581	27	\$13,755	36
East Williston School District	\$24,948	47	\$12,668	47
Eastport-South Manor Central School District	\$18,668	104	\$9,186	110
Elmont School District	\$17,062	122	\$9,039	112
Elwood School District	\$18,055	115	\$8,989	117
Farmingdale School District	\$21,085	75	\$10,668	76
Fire Island Union Free School District	\$117,259	3	\$43,562	5
Fishers Island Union Free School District	\$39,347	14	\$20,481	16
Floral Park-Bellerose School District	\$15,972	125	\$9,108	111
Franklin Square School District	\$16,600	124	\$9,007	113

<sup>1</sup>Total includes capital spending; therefore district totals for a given year may be inflated by building spending.

<sup>2</sup>Instruction spending may include teacher salaries, supplies/materials, BOCES services, equipment, noninstructional salaries, etc.

## Per Pupil Spending - Breakdown by Region

<i>Long Island (con't)</i>	<b>Total<sup>1</sup></b>		<b>Instruction<sup>2</sup></b>	
	<i>Total</i>	<i>Region Rank</i>	<i>Total</i>	<i>Region Rank</i>
Freeport School District	\$21,349	69	\$12,387	49
Garden City School District	\$21,030	76	\$10,267	87
Glen Cove School District	\$23,240	55	\$11,883	56
Great Neck School District	\$29,911	31	\$14,970	28
Greenport School District	\$21,317	72	\$10,959	70
Half Hollow Hills School District	\$19,948	90	\$9,593	104
Hampton Bays School District	\$33,169	20	\$11,153	64
Harborfields School District	\$18,074	114	\$8,829	120
Hauppauge School District	\$21,331	70	\$10,039	95
Hempstead School District	\$29,613	32	\$13,890	34
Herricks School District	\$22,831	60	\$11,586	61
Hewlett-Woodmere School District	\$28,953	34	\$14,358	29
Hicksville School District	\$20,588	84	\$10,380	85
Huntington School District	\$24,372	51	\$12,744	46
Island Park School District	\$41,023	13	\$23,527	13
Island Trees School District	\$19,286	100	\$10,513	82
Islip School District	\$18,252	110	\$9,195	109
Jericho School District	\$30,097	29	\$16,456	18
Kings Park School District	\$17,766	117	\$8,487	125
Lawrence School District	\$31,224	26	\$15,869	20
Levittown School District	\$23,152	57	\$12,331	51
Lindenhurst School District	\$19,262	101	\$9,763	101
Little Flower School District	\$50,434	10	\$27,105	12
Locust Valley School District	\$28,096	36	\$13,142	43
Long Beach School District	\$27,666	38	\$13,577	38
Longwood School District	\$21,288	73	\$10,979	68
Lynbrook School District	\$21,123	74	\$10,741	74
Malverne School District	\$24,679	49	\$13,878	35
Manhasset School District	\$28,597	35	\$13,273	42
Massapequa School District	\$20,587	85	\$10,587	80
Mattituck-Cutchogue School District	\$22,459	62	\$10,085	92
Merrick School District	\$20,767	82	\$11,661	59
Middle Country	\$19,870	91	\$8,625	124
Miller Place School District	\$17,548	119	\$8,874	118
Mineola School District	\$32,302	23	\$15,193	24
Montauk School District	\$47,229	11	\$27,348	11
Mount Sinai School District	\$19,159	102	\$9,316	107
New Hyde Park-Garden City Park School District	\$17,563	118	\$8,671	123
New Suffolk School District	\$89,838	4	\$65,270	3
North Bablyon School District	\$20,890	80	\$10,952	71
North Bellmore Union Free School District	\$18,577	105	\$10,296	86
North Merrick School District	\$18,307	108	\$10,029	96
North Shore School District	\$31,447	25	\$15,348	22
Northport-East Northport School District	\$20,949	78	\$10,721	75
Oceanside School District	\$19,778	94	\$10,982	66
Oyster Bay-East Norwich School District	\$33,995	19	\$15,056	27
Oysterponds School District	\$55,426	8	\$35,759	7
Patchogue-Medford School District	\$18,476	107	\$9,004	114
Plainedge School District	\$19,591	97	\$9,442	106
Plainview-Old Bethpage School District	\$23,194	56	\$11,987	54
Port Jefferson School District	\$27,858	37	\$12,336	50
Port Washington School District	\$24,846	48	\$12,981	44
Quogue School District	\$66,602	7	\$40,413	6
Remsenburg-Speonk School District	\$52,346	9	\$35,725	8
Riverhead School District	\$21,677	67	\$11,731	58
Rockville Centre School District	\$23,994	53	\$12,473	48
Rocky Point School District	\$18,491	106	\$10,024	97
Roosevelt School District	\$39,336	15	\$14,256	30
Roslyn School District	\$26,430	43	\$12,777	45
Sachem School District	\$18,224	111	\$8,810	121

<sup>1</sup>Total includes capital spending; therefore district totals for a given year may be inflated by building spending.

<sup>2</sup>Instruction spending may include teacher salaries, supplies/materials, BOCES services, equipment, noninstructional salaries, etc.

## Per Pupil Spending - Breakdown by Region

<i>Long Island (con't)</i>	<b>Total<sup>1</sup></b>		<b>Instruction<sup>2</sup></b>	
	<i>Total</i>	<i>Region Rank</i>	<i>Total</i>	<i>Region Rank</i>
Sag Harbor School District	\$33,095	21	\$16,230	19
Sagaponack School District	\$133,558	2	\$81,190	2
Sayville School District	\$21,535	68	\$10,041	94
Seaford School District	\$19,669	96	\$10,170	90
Sewanhaka School District	\$17,219	120	\$8,990	116
Shelter Island School District	\$33,023	22	\$15,382	21
Shoreham-Wading River School District	\$19,831	93	\$8,866	119
Smithtown School District	\$18,211	112	\$8,732	122
South Country School District	\$26,704	41	\$11,874	57
South Huntington School District	\$21,857	66	\$11,368	62
Southampton School District	\$35,074	17	\$15,328	23
Southold School District	\$22,964	58	\$10,935	72
Springs School District	\$34,383	18	\$21,787	14
Syosset School District	\$25,487	45	\$13,492	39
Three Village School District	\$19,858	92	\$9,609	103
Tuckahoe Common School District	\$38,422	16	\$21,669	15
Uniondale School District	\$25,296	46	\$15,181	25
Valley Stream School District	\$19,982	89	\$10,057	93
Valley Stream Thirteen School District	\$17,144	121	\$10,226	88
Valley Stream Thirty School District	\$18,883	103	\$10,448	83
Valley Stream Twenty-Four School District	\$20,666	83	\$11,997	53
Wainscott School District	\$244,582	1	\$97,346	1
Wantagh School District	\$16,854	123	\$8,999	115
West Babylon School District	\$20,152	88	\$9,925	99
West Hempstead School District	\$22,839	59	\$11,284	63
West Islip School District	\$18,055	116	\$9,215	108
Westbury School District	\$25,512	44	\$14,018	33
Westhampton Beach School District	\$30,485	28	\$13,392	41
William Floyd School District	\$19,496	99	\$9,686	102
Wyandanch School District	\$29,559	33	\$14,080	32
<i>Mid-Hudson Region</i>	<i>Total</i>	<i>Region Rank</i>	<i>Total</i>	<i>Region Rank</i>
Abbott Union Free School District	\$62,251	4	\$25,271	7
Ardasley Union Free School District	\$24,625	40	\$12,001	39
Arlington Central School District	\$17,048	103	\$7,717	108
Beacon City School District	\$16,769	104	\$8,283	103
Bedford Central School District	\$29,077	19	\$13,080	24
Blind Brook-Rye Union Free School District	\$23,740	47	\$11,669	45
Brewster Central School District	\$23,559	50	\$11,423	51
Briarcliff Manor Union Free School District	\$27,838	23	\$13,081	23
Bronxville Union Free School District	\$35,288	13	\$14,009	14
Byram Hills Central School District	\$25,649	34	\$11,426	50
Carmel Central School District	\$21,869	70	\$10,017	78
Chappaqua Central School District	\$23,872	46	\$11,555	48
Chester Union Free School District	\$20,586	81	\$9,229	91
Clarkstown Central School District	\$17,468	100	\$9,462	87
Cornwall Central School District	\$15,692	108	\$7,878	106
Croton-Harmon Union Free School District	\$22,787	57	\$10,417	69
Dobbs Ferry Union Free School District	\$25,011	39	\$12,187	37
Dover Union Free School District	\$17,258	101	\$7,721	107
East Ramapo	\$27,635	25	\$13,989	15
Eastchester School District	\$22,514	60	\$11,165	56
Edgemont School District	\$22,174	65	\$10,880	60
Eldred School District	\$23,185	53	\$11,415	52
Ellenville School District	\$22,719	58	\$10,728	62
Elmsford School District	\$26,979	27	\$13,692	18
Fallsburg School District	\$23,707	48	\$11,385	53
Florida School District	\$18,801	92	\$9,062	95
Garrison School District	\$27,796	24	\$13,369	19
Goshen School District	\$19,987	87	\$10,351	72
Greenburgh Central School District	\$33,645	15	\$15,871	12

<sup>1</sup>Total includes capital spending; therefore district totals for a given year may be inflated by building spending.

<sup>2</sup>Instruction spending may include teacher salaries, supplies/materials, BOCES services, equipment, noninstructional salaries, etc.

## Per Pupil Spending - Breakdown by Region

<i>Mid-Hudson Region (con't)</i>	<b>Total<sup>1</sup></b>		<b>Instruction<sup>2</sup></b>	
	<i>Total</i>	<i>Region Rank</i>	<i>Total</i>	<i>Region Rank</i>
Greenburgh Eleven School District	\$50,222	7	\$27,204	5
Greenburgh-Graham School District	\$46,846	9	\$20,443	8
Greenburgh-North Castle Union Free School District	\$56,578	5	\$31,834	4
Greenwood Lake School District	\$32,346	16	\$18,896	10
Haldane School District	\$21,619	74	\$10,217	75
Harrison School District	\$27,885	22	\$13,238	21
Hastings-On-Hudson School District	\$24,099	44	\$12,403	35
Haverstraw-Stony Point School District	\$23,178	54	\$10,993	59
Hawthorne-Cedar Knolls School District	\$53,640	6	\$19,545	9
Hendrick Hudson School District	\$25,412	37	\$12,918	26
Highland Falls-Fort Montgomery School District	\$19,141	90	\$9,212	92
Highland School District	\$17,746	98	\$8,408	102
Hyde Park School District	\$17,899	97	\$8,447	100
Irvington School District	\$26,362	29	\$11,784	42
Katonah-Lewisboro School District	\$26,167	32	\$11,922	40
Kingston School District	\$18,644	94	\$10,219	74
Kiryas Joel Village Union Free School District	\$110,844	1	\$68,365	1
Lakeland School District	\$22,083	67	\$10,480	68
Liberty School District	\$23,915	45	\$12,594	30
Livingston Manor School District	\$25,431	36	\$12,452	34
Mahopac School District	\$20,147	85	\$10,573	66
Mamaroneck School District	\$24,235	42	\$11,633	47
Marlboro School District	\$21,892	69	\$11,213	54
Middletown School District	\$20,483	83	\$10,229	73
Millbrook School District	\$20,557	82	\$9,524	85
Minisink Valley School District	\$21,906	68	\$8,584	99
Monroe-Woodbury School District	\$19,088	91	\$9,112	94
Monticello School District	\$21,618	75	\$11,728	43
Mount Pleasant Cottage School District	\$48,869	8	\$25,317	6
Mount Pleasant School District	\$28,168	21	\$12,159	38
Mount Pleasant-Blythedale School District	\$78,072	2	\$32,426	3
Mount Vernon School District	\$23,061	55	\$12,353	36
Nanuet School District	\$26,238	30	\$11,666	46
New Paltz School District	\$20,889	80	\$9,684	84
New Rochelle School District	\$22,097	66	\$10,669	64
Newburgh School District	\$20,276	84	\$10,205	76
North Salem School District	\$27,565	26	\$12,999	25
Northeast School District	\$22,202	64	\$9,324	90
Nyack School District	\$22,939	56	\$12,890	27
Onteora School District	\$25,478	35	\$12,485	33
Ossining School District	\$25,979	33	\$12,682	29
Pawling School District	\$22,444	61	\$9,984	79
Pearl River School District	\$21,106	78	\$9,852	81
Peekskill School District	\$33,925	14	\$14,931	13
Pelham School District	\$19,834	89	\$10,373	70
Pine Bush School District	\$16,424	105	\$8,805	98
Pine Plains School District	\$19,903	88	\$9,141	93
Pleasantville School District	\$21,678	73	\$11,454	49
Pocantico Hills School District	\$72,213	3	\$41,059	2
Port Chester-Rye School District	\$21,234	77	\$9,727	83
Port Jervis School District	\$18,704	93	\$9,508	86
Poughkeepsie School District	\$17,952	96	\$10,108	77
Putnam Valley School District	\$21,720	71	\$10,536	67
Ramapo School District	\$24,144	43	\$12,579	32
Red Hook School District	\$18,373	95	\$9,326	89
Rhinebeck School District	\$20,954	79	\$9,806	82
Rhinecliff School District	<i>NDR</i>	<i>NDR</i>	<i>NDR</i>	<i>NDR</i>
Rondout Valley School District	\$22,557	59	\$11,031	58
Roscoe School District	\$28,902	20	\$12,876	28
Rye Neck School District	\$24,259	41	\$10,356	71

<sup>1</sup>Total includes capital spending; therefore district totals for a given year may be inflated by building spending.

<sup>2</sup>Instruction spending may include teacher salaries, supplies/materials, BOCES services, equipment, noninstructional salaries, etc.



## Per Pupil Spending - Breakdown by Region

	<b>Total<sup>1</sup></b>		<b>Instruction<sup>2</sup></b>	
	<i>Total</i>	<i>Region Rank</i>	<i>Total</i>	<i>Region Rank</i>
<b>Mid-Hudson Region (con't)</b>				
Rye School District	\$25,015	38	\$10,625	65
Saugerties School District	\$21,708	72	\$8,911	96
Scarsdale School District	\$26,879	28	\$13,318	20
Somers School District	\$30,370	17	\$11,892	41
South Orangetown School District	\$22,246	63	\$10,860	61
Spackenkill School District	\$20,061	86	\$9,389	88
Sugar Loaf School District	<i>NDR</i>	<i>NDR</i>	<i>NDR</i>	<i>NDR</i>
Sullivan West Central School District	\$23,336	52	\$9,859	80
Tri-Valley School District	\$23,670	49	\$10,695	63
Tuckahoe School District	\$35,433	12	\$12,582	31
Tuxedo School District	\$23,338	51	\$11,172	55
Union Free School District of The Tarrytowns	\$36,398	11	\$13,749	17
Valhalla School District	\$26,194	31	\$13,103	22
Valley Central School District	\$15,819	107	\$8,119	104
Walkkill School District	\$16,217	106	\$8,440	101
Wappingers School District	\$14,466	109	\$6,718	109
Warwick Valley School District	\$17,490	99	\$8,904	97
Washingtonville School District	\$17,223	102	\$7,935	105
West Park School District	\$43,341	10	\$16,860	11
White Plains School District	\$29,120	18	\$13,969	16
Yonkers School District	\$22,300	62	\$11,709	44
Yorktown School District	\$21,595	76	\$11,144	57
<b>Mohawk Valley</b>				
	<i>Total</i>	<i>Region Rank</i>	<i>Total</i>	<i>Region Rank</i>
Adirondack Central School District	\$17,641	33	\$7,992	31
Amsterdam City School District	\$16,099	40	\$7,634	37
Bridgewater-West Winfield Central School District	\$16,593	37	\$8,165	29
Broadalbin-Perth Central School District	\$15,401	43	\$6,567	49
Camden Central School District	\$19,743	16	\$7,988	32
Canajoharie Central School District	\$17,417	35	\$8,929	16
Clinton Central School District	\$16,313	39	\$7,015	44
Cobleskill-Richmondville Central School District	\$18,085	30	\$7,504	38
Dolgeville Central School District	\$16,465	38	\$8,621	19
Fonda-Fultonville School District	\$17,994	31	\$8,479	24
Fort Plain School District	\$19,015	22	\$8,495	22
Frankfort-Schuyler School District	\$13,236	50	\$6,413	50
Gilboa-Conesville School District	\$23,875	9	\$11,082	8
Gloversville School District	\$19,032	21	\$8,470	25
Herkimer School District	\$14,798	47	\$7,228	42
Holland Patent School District	\$15,937	41	\$7,738	35
Ilion School District	\$14,037	48	\$6,761	47
Indian Lake School District	\$32,172	5	\$15,135	5
Inlet School District	\$34,440	4	\$24,569	1
Jefferson School District	\$18,990	23	\$8,991	15
Johnstown School District	\$19,917	15	\$7,363	40
Lake Pleasant School District	\$46,551	3	\$17,886	4
Little Falls School District	\$17,519	34	\$7,486	39
Long Lake School District	\$51,098	2	\$19,727	3
Mayfield School District	\$15,619	42	\$6,821	46
Middleburgh Central School District	\$22,927	10	\$9,802	13
Mohawk School District	\$15,291	44	\$7,711	36
New Hartford School District	\$16,958	36	\$7,976	33
New York Mills School District	\$18,471	25	\$9,845	12
Northville School District	\$19,349	20	\$8,628	18
Oppenheim-Ephratah School District	\$21,131	13	\$10,155	10
Oriskany School District	\$18,465	26	\$8,171	28
Piseco School District	\$55,488	1	\$22,672	2
Poland School District	\$18,300	28	\$8,292	26
Raquette Lake School District	<i>NDR</i>	<i>NDR</i>	<i>NDR</i>	<i>NDR</i>
Remsen School District	\$21,871	12	\$10,511	9
Rome School District	\$19,653	18	\$9,307	14

<sup>1</sup>Total includes capital spending; therefore district totals for a given year may be inflated by building spending.

<sup>2</sup>Instruction spending may include teacher salaries, supplies/materials, BOCES services, equipment, noninstructional salaries, etc.

<b>Per Pupil Spending - Breakdown by Region</b>				
	<b>Total<sup>1</sup></b>		<b>Instruction<sup>2</sup></b>	
<i>Mohawk Valley (con't)</i>	<i>Total</i>	<i>Region Rank</i>	<i>Total</i>	<i>Region Rank</i>
Saint Johnsville School District	\$18,099	29	\$7,337	41
Sauquoit Valley School District	\$20,460	14	\$8,008	30
Schoharie School District	\$18,940	24	\$8,488	23
Sharon Springs School District	\$19,718	17	\$8,605	20
Sherrill School District	\$14,823	46	\$6,731	48
Utica City School District	\$14,984	45	\$8,172	27
Van Hornesville-Owen D. Young School District	\$25,518	8	\$8,715	17
Waterville School District	\$17,715	32	\$7,892	34
Webb School District	\$28,242	7	\$9,957	11
Wells School District	\$29,604	6	\$12,947	6
West Canada Valley School District	\$19,573	19	\$7,192	43
Westmoreland School District	\$18,347	27	\$8,600	21
Wheelerville School District	\$22,734	11	\$11,519	7
Whitesboro School District	\$13,758	49	\$6,950	45
<i>North Country</i>	<i>Total</i>	<i>Region Rank</i>	<i>Total</i>	<i>Region Rank</i>
Alexandria Central School District	\$16,020	53	\$7,834	37
Ausable Valley Central School District	\$24,187	11	\$9,478	15
Beaver River Central School District	\$16,530	50	\$7,702	40
Beekmantown Central School District	\$17,310	41	\$7,904	34
Belleville-Henderson Central School District	\$16,618	48	\$7,949	33
Brasher Falls Central School District	\$17,267	43	\$6,294	58
Brushton-Moira Central School District	\$19,432	24	\$8,816	26
Canton Central School District	\$18,117	35	\$7,386	46
Carthage Central School District	\$21,060	19	\$7,589	41
Chateaugay Central School District	\$17,172	44	\$7,298	50
Chazy Union Free School District	\$16,637	47	\$7,489	43
Clifton-Fine Central School District	\$25,625	7	\$9,754	13
Colton-Pierrepont Central School District	\$28,815	5	\$11,911	7
Copenhagen Central School District	\$18,466	32	\$7,508	42
Crown Point Central School District	\$25,312	8	\$12,118	5
Edwards-Knox School District	\$19,390	25	\$7,789	39
Elizabethtown-Lewis School District	\$23,066	12	\$9,304	20
General Brown School District	\$12,570	59	\$5,859	59
Gouverneur School District	\$17,492	40	\$7,369	48
Hammond School District	\$18,436	33	\$6,704	56
Harrisville School District	\$19,316	26	\$7,844	36
Hermon-De Kalb School District	\$22,312	17	\$9,910	12
Heuvelton School District	\$19,130	29	\$9,308	19
Indian River School District	\$14,862	56	\$7,192	52
Keene School District	\$32,543	3	\$14,890	3
Lafargeville School District	\$15,754	54	\$7,846	35
Lake Placid School District	\$23,032	13	\$9,300	21
Lisbon School District	\$19,230	27	\$8,247	29
Lowville School District	\$15,200	55	\$7,341	49
Lyme School District	\$19,179	28	\$9,326	18
Madrid-Waddington School District	\$16,707	46	\$7,212	51
Malone School District	\$17,528	39	\$8,048	31
Massena School District	\$17,267	42	\$6,796	55
Minerva School District	\$38,873	2	\$16,296	2
Moriah School District	\$19,543	23	\$8,879	23
Morristown School District	\$24,758	9	\$12,057	6
Newcomb Central School District	\$69,148	1	\$20,145	1
Northeastern Clinton School District	\$17,574	38	\$8,844	24
Northern Adirondack Central School District	\$17,662	37	\$8,828	25
Norwood-Norfolk School District	\$18,089	36	\$7,438	44
Ogdensburg School District	\$19,969	22	\$9,228	22
Parishville-Hopkinton School District	\$16,540	49	\$7,004	53
Peru School District	\$18,239	34	\$8,074	30
Plattsburgh School District	\$20,012	20	\$10,474	10
Potsdam School District	\$30,493	4	\$8,590	27

<sup>1</sup>Total includes capital spending; therefore district totals for a given year may be inflated by building spending.

<sup>2</sup>Instruction spending may include teacher salaries, supplies/materials, BOCES services, equipment, noninstructional salaries, etc.

<b>Per Pupil Spending - Breakdown by Region</b>				
	<b>Total<sup>1</sup></b>		<b>Instruction<sup>2</sup></b>	
<i>North Country (con't)</i>	<i>Total</i>	<i>Region Rank</i>	<i>Total</i>	<i>Region Rank</i>
Sackets Harbor School District	\$16,054	52	\$7,371	47
Saint Regis Falls School District	\$26,932	6	\$11,777	8
Salmon River School District	\$22,964	14	\$10,862	9
Saranac Lake School District	\$19,116	30	\$7,792	38
Saranac School District	\$16,502	51	\$8,507	28
Schroon Lake School District	\$24,285	10	\$12,165	4
South Jefferson School District	\$14,022	57	\$6,701	57
South Lewis School District	\$21,787	18	\$9,372	16
Thousand Islands School District	\$18,536	31	\$7,964	32
Ticonderoga School District	\$19,981	21	\$9,340	17
Tupper Lake School District	\$16,717	45	\$7,405	45
Watertown School District	\$14,000	58	\$6,844	54
Westport School District	\$22,431	15	\$10,340	11
Willsboro School District	\$22,421	16	\$9,506	14
<i>Southern Tier</i>	<i>Total</i>	<i>Region Rank</i>	<i>Total</i>	<i>Region Rank</i>
Addison Central School District	\$18,631	39	\$8,680	30
Afton Central School District	\$22,580	16	\$8,624	31
Andes Central School District	\$29,136	5	\$11,664	2
Arkport Central School District	\$13,971	74	\$6,856	73
Avoca Central School District	\$32,380	4	\$9,076	20
Bainbridge-Guilford Central School District	\$17,167	59	\$8,472	35
Bath Central School District	\$17,192	57	\$7,779	51
Binghamton City School District	\$16,804	63	\$8,838	25
Bradford Central School District	\$23,088	13	\$11,466	3
Campbell-Savona Central School District	\$17,785	48	\$7,732	56
Candor Central School District	\$19,583	31	\$8,243	43
Canisteo-Greenwood Central School District	\$20,854	21	\$8,765	26
Charlotte Valley Central School District	\$21,276	18	\$11,022	5
Chenango Forks Central School District	\$19,491	33	\$7,749	54
Chenango Valley Central School District	\$17,520	53	\$7,715	58
Cherry Valley-Springfield Central School District	\$20,632	22	\$8,711	28
Cooperstown Central School District	\$16,201	71	\$7,665	59
Corning City School District	\$15,898	72	\$7,218	68
Delhi Central School District	\$25,640	10	\$9,221	18
Deposit Central School District	\$22,975	14	\$10,327	8
Downsville Central School District	\$28,259	7	\$10,711	6
Dryden Central School District	\$17,946	46	\$8,551	33
Edmeston School District	\$18,161	42	\$8,680	29
Elmira Heights School District	\$17,190	58	\$8,442	37
Elmira School District	\$19,203	35	\$8,242	44
Franklin School District	\$27,405	8	\$9,867	11
George Junior Republic School District	\$39,882	2	\$24,596	1
Georgetown-South Otselic School District	\$19,493	32	\$8,440	38
Gilbertsville-Mount Upton Central School District	\$16,587	69	\$7,555	62
Greene School District	\$19,919	26	\$8,978	21
Groton School District	\$17,577	52	\$8,846	24
Hammondsport School District	\$28,975	6	\$9,724	12
Hancock Central School District	\$22,649	15	\$10,315	9
Harpursville School District	\$17,057	61	\$8,563	32
Hornell School District	\$16,824	62	\$8,410	40
Horseheads School District	\$17,095	60	\$7,217	69
Ithaca School District	\$18,663	37	\$9,622	13
Jasper-Troupsburg School District	\$16,702	67	\$7,428	64
Johnson City School District	\$18,045	44	\$8,734	27
Lansing School District	\$18,630	40	\$8,174	46
Laurens School District	\$40,828	1	\$9,408	14
Maine-Endwell School District	\$17,249	56	\$8,415	39
Margaretville School District	\$20,565	24	\$9,354	16
Milford School District	\$21,153	19	\$9,381	15
Morris School District	\$19,807	29	\$8,114	47

<sup>1</sup>Total includes capital spending; therefore district totals for a given year may be inflated by building spending.

<sup>2</sup>Instruction spending may include teacher salaries, supplies/materials, BOCES services, equipment, noninstructional salaries, etc.

<b>Per Pupil Spending - Breakdown by Region</b>				
	<b>Total<sup>1</sup></b>		<b>Instruction<sup>2</sup></b>	
<i>Southern Tier (con't)</i>	<i>Total</i>	<i>Region Rank</i>	<i>Total</i>	<i>Region Rank</i>
Newark Valley School District	\$17,711	49	\$7,368	67
Newfield School District	\$16,621	68	\$7,736	55
Norwich School District	\$26,960	9	\$8,300	41
Odessa-Montour School District	\$16,726	66	\$7,560	61
Oneonta School District	\$19,253	34	\$8,905	23
Otego-Unadilla School District	\$16,732	65	\$7,638	60
Owego-Apalachin School District	\$17,965	45	\$7,774	52
Oxford School District	\$18,649	38	\$7,804	50
Prattsburgh School District	\$21,133	20	\$8,259	42
Richfield Springs School District	\$17,426	54	\$6,937	71
Roxbury School District	\$38,501	3	\$11,322	4
Schenevus School District	\$20,578	23	\$9,110	19
Sherburne-Earlville School District	\$18,419	41	\$8,192	45
Sidney School District	\$19,849	28	\$8,539	34
South Kortright School District	\$23,841	11	\$10,584	7
South Mountain-Hickory School District	<i>NDR</i>	<i>NDR</i>	<i>NDR</i>	<i>NDR</i>
Spencer-Van Etten School District	\$17,335	55	\$6,978	70
Stamford School District	\$19,888	27	\$9,248	17
Susquehanna Valley School District	\$16,733	64	\$6,915	72
Tioga School District	\$14,084	73	\$6,246	74
Trumansburg School District	\$17,798	47	\$7,409	66
Unadilla Valley School District	\$20,128	25	\$7,520	63
Union-Endicott School District	\$17,696	50	\$7,750	53
Vestal School District	\$21,605	17	\$8,452	36
Walton School District	\$18,122	43	\$7,426	65
Watkins Glen School District	\$19,023	36	\$7,823	49
Waverly School District	\$12,674	75	\$6,020	75
Wayland-Cohocton Central School District	\$17,668	51	\$8,023	48
Whitney Point School District	\$23,589	12	\$8,936	22
Windsor School District	\$16,553	70	\$7,715	57
Worcester School District	\$19,634	30	\$9,916	10
<i>Western New York</i>	<i>Total</i>	<i>Region Rank</i>	<i>Total</i>	<i>Region Rank</i>
Akron Central School District	\$16,034	59	\$7,404	64
Alden Central School District	\$16,044	58	\$7,210	71
Alfred-Almond Central School District	\$16,685	54	\$7,440	63
Allegany-Limestone School District	\$15,903	60	\$7,642	58
Amherst Central School District	\$14,424	77	\$7,383	65
Andover Central School District	\$19,982	24	\$8,668	34
Barker Central School District	\$21,316	15	\$9,178	22
Belfast Central School District	\$20,534	20	\$10,586	9
Bemus Point Central School District	\$15,744	62	\$7,290	67
Bolivar-Richburg Central School District	\$22,643	10	\$8,966	27
Brocton Central School School District	\$22,001	12	\$10,618	8
Buffalo City School District	\$22,418	11	\$9,842	16
Canaseraga Central School District	\$20,892	17	\$10,312	11
Cassadaga Valley Central School District	\$19,189	28	\$8,252	46
Cattaraugus-Little Valley Central School District	\$20,452	21	\$11,024	5
Chautauqua Lake Central School District	\$22,679	9	\$10,055	13
Cheektowaga Central School District	\$15,326	68	\$7,134	72
Cheektowaga-Maryvale Union Free School District	\$18,151	39	\$8,157	49
Cheektowaga-Sloan Union Free School District	\$20,662	19	\$9,201	21
Clarence Central School District	\$14,816	73	\$6,552	78
Cleveland Hill Union Free School District	\$16,813	53	\$8,602	35
Clymer Central School District	\$23,201	8	\$9,059	24
Cuba-Rushford Central School District	\$21,687	13	\$9,924	15
Depew School District	\$16,962	51	\$8,432	40
Dunkirk City School District	\$18,609	36	\$10,490	10

<sup>1</sup>Total includes capital spending; therefore district totals for a given year may be inflated by building spending.

<sup>2</sup>Instruction spending may include teacher salaries, supplies/materials, BOCES services, equipment, noninstructional salaries, etc.

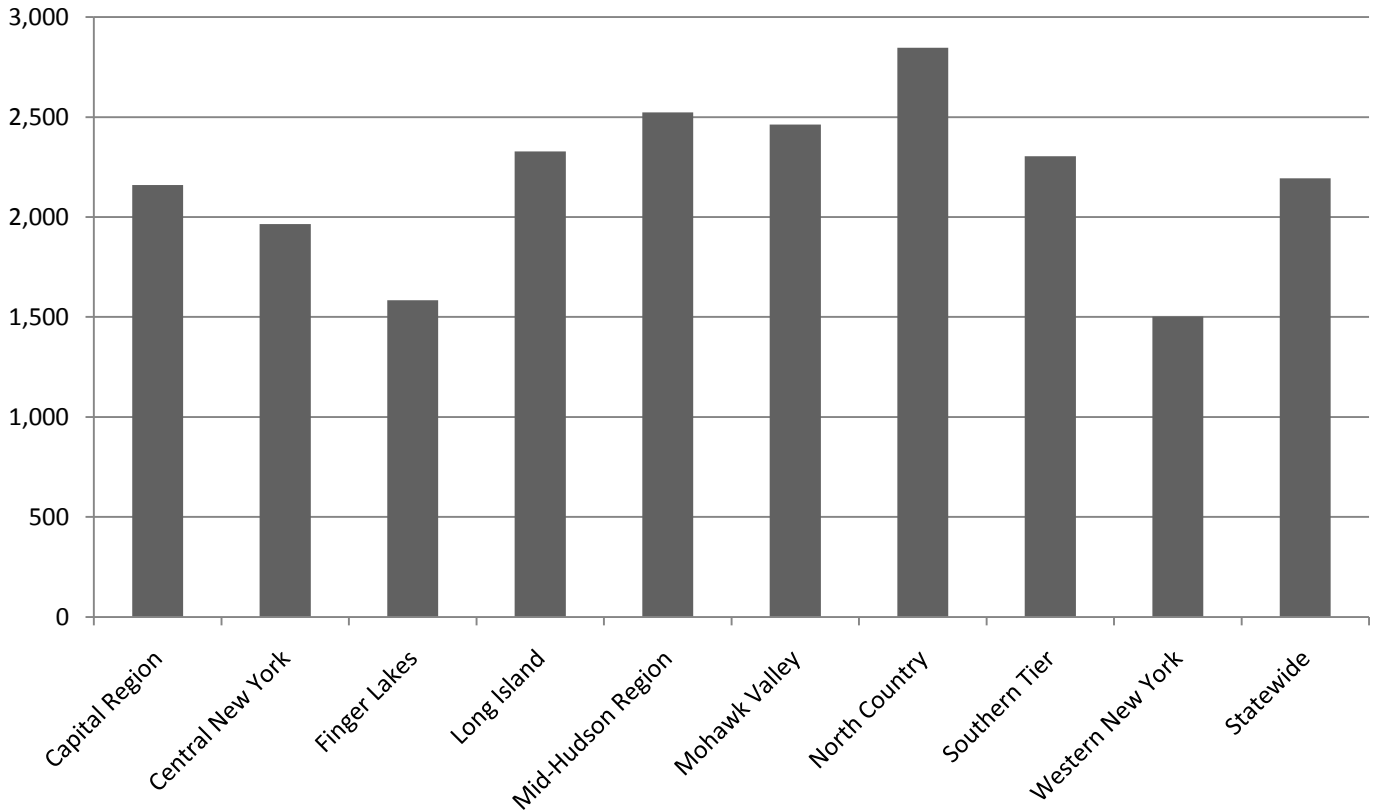
## Per Pupil Spending - Breakdown by Region

<i>Western New York (con't)</i>	<b>Total<sup>1</sup></b>		<b>Instruction<sup>2</sup></b>	
	<i>Total</i>	<i>Region Rank</i>	<i>Total</i>	<i>Region Rank</i>
East Aurora School District	\$15,300	69	\$7,736	56
Eden School District	\$14,952	71	\$6,138	81
Ellicottville School District	\$18,870	31	\$8,746	31
Evans-Brant School District	\$17,346	48	\$7,781	55
Falconer School District	\$14,240	79	\$6,312	80
Fillmore School District	\$30,515	3	\$8,482	37
Forestville School District	\$16,583	55	\$8,675	33
Franklinville School District	\$20,334	22	\$10,031	14
Fredonia School District	\$16,815	52	\$8,158	48
Frewsburg School District	\$17,021	50	\$6,718	77
Friendship School District	\$28,378	4	\$14,165	3
Frontier School District	\$13,115	81	\$6,861	76
Genesee Valley School District	\$20,777	18	\$8,253	45
Gowanda Central School District	\$19,686	26	\$8,037	50
Grand Island School District	\$14,783	74	\$7,035	73
Hamburg School District	\$15,583	65	\$7,244	69
Hinsdale School District	\$18,779	32	\$9,044	25
Holland School District	\$17,220	49	\$8,008	51
Hopevale School District	\$41,111	2	\$19,257	1
Iroquois School District	\$13,501	80	\$6,550	79
Jamestown School District	\$19,137	30	\$8,778	29
Kenmore-Town Of Tonawanda School District	\$17,811	43	\$8,504	36
Lackawanna School District	\$18,621	35	\$10,192	12
Lancaster School District	\$12,669	82	\$5,709	82
Lewiston-Porter School District	\$20,057	23	\$8,382	41
Lockport School District	\$15,813	61	\$8,323	43
Newfane School District	\$16,417	56	\$7,528	60
Niagara Falls School District	\$19,851	25	\$8,869	28
Niagara-Wheatfield School District	\$17,472	45	\$7,961	52
North Collins School District	\$18,409	37	\$9,307	19
North Tonawanda School District	\$14,695	75	\$7,956	53
Olean School District	\$15,697	63	\$9,017	26
Orchard Park School District	\$14,407	78	\$7,935	54
Panama School District	\$18,115	40	\$8,436	39
Pine Valley Central School District	\$19,153	29	\$8,299	44
Portville School District	\$17,472	46	\$7,575	59
Randolph Academy School District	\$43,516	1	\$18,434	2
Randolph School District	\$18,185	38	\$8,221	47
Ripley School District	\$23,950	7	\$11,940	4
Royalton-Hartland School District	\$15,402	67	\$7,444	62
Salamanca City School District	\$25,497	6	\$9,609	17
Scio School District	\$28,331	5	\$10,702	7
Sherman School District	\$17,760	44	\$8,681	32
Silver Creek School District	\$17,405	47	\$8,369	42
Southwestern School District	\$19,323	27	\$7,453	61
Springville-Griffith Institute School District	\$15,650	64	\$7,250	68
Starpoint School District	\$15,039	70	\$6,940	74
Sweet Home School District	\$18,648	33	\$8,441	38
Tonawanda School District	\$15,464	66	\$7,678	57
Wellsville School District	\$18,049	41	\$8,758	30
West Seneca School District	\$14,879	72	\$6,896	75
West Valley School District	\$21,288	16	\$9,278	20
Westfield School District	\$17,959	42	\$9,177	23
Whitesville School District	\$21,550	14	\$10,830	6
Williamsville	\$14,467	76	\$7,344	66
Wilson School District	\$16,073	57	\$7,224	70
Yorkshire-Pioneer School District	\$18,627	34	\$9,355	18

<sup>1</sup>Total includes capital spending; therefore district totals for a given year may be inflated by building spending.

<sup>2</sup>Instruction spending may include teacher salaries, supplies/materials, BOCES services, equipment, noninstructional salaries, etc.

### Average Medical Insurance Per Pupil by Region



### Average Aid Per Pupil by Region

